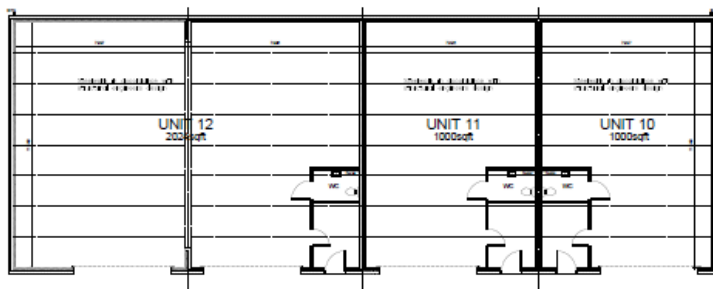
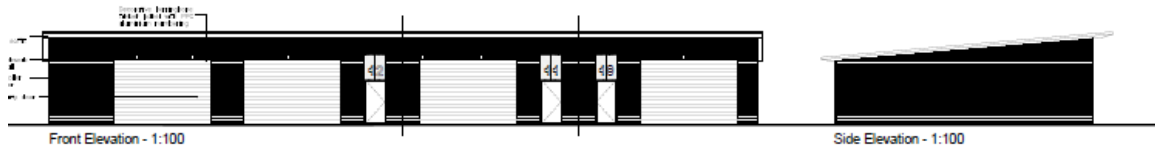


**Appendix F - Proposed Units 10- 12  
Application Number: 23/1490/FUL**



**S H E House Macklin Avenue, Cowpen Lane Industrial Estate**

Partial demolition & sub-division of existing building into 45no self-storage units (Use Class B8) and 4no employment units (Use Class B2/B8), erection of 4no employment buildings (Use Class B2/B8) & 36no starter units (Use Class B2/B8) with associated infrastructure including access and landscaping